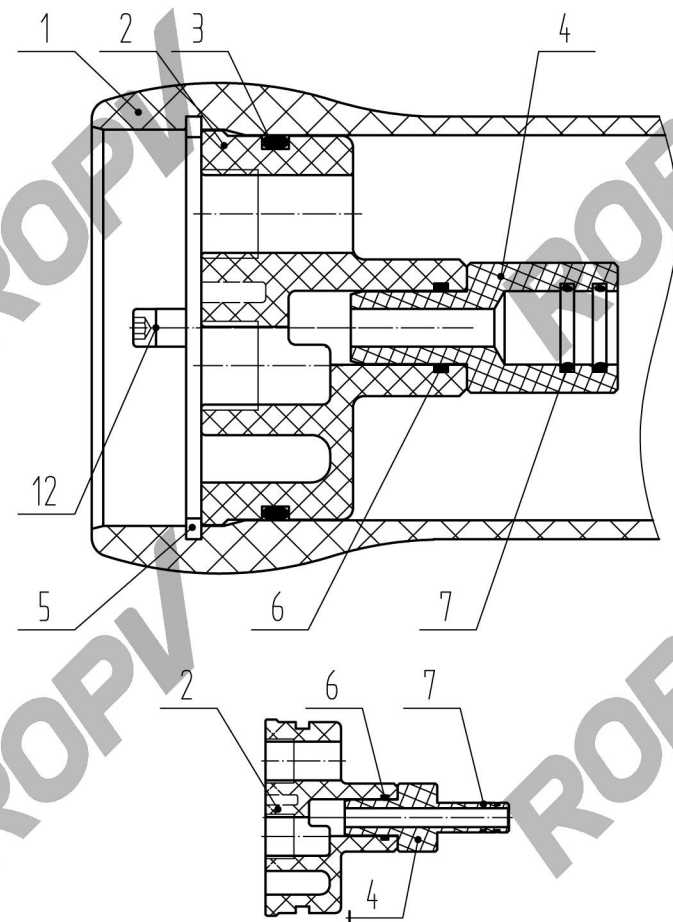
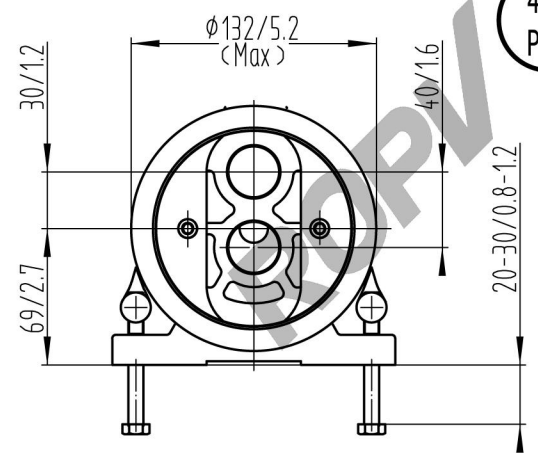
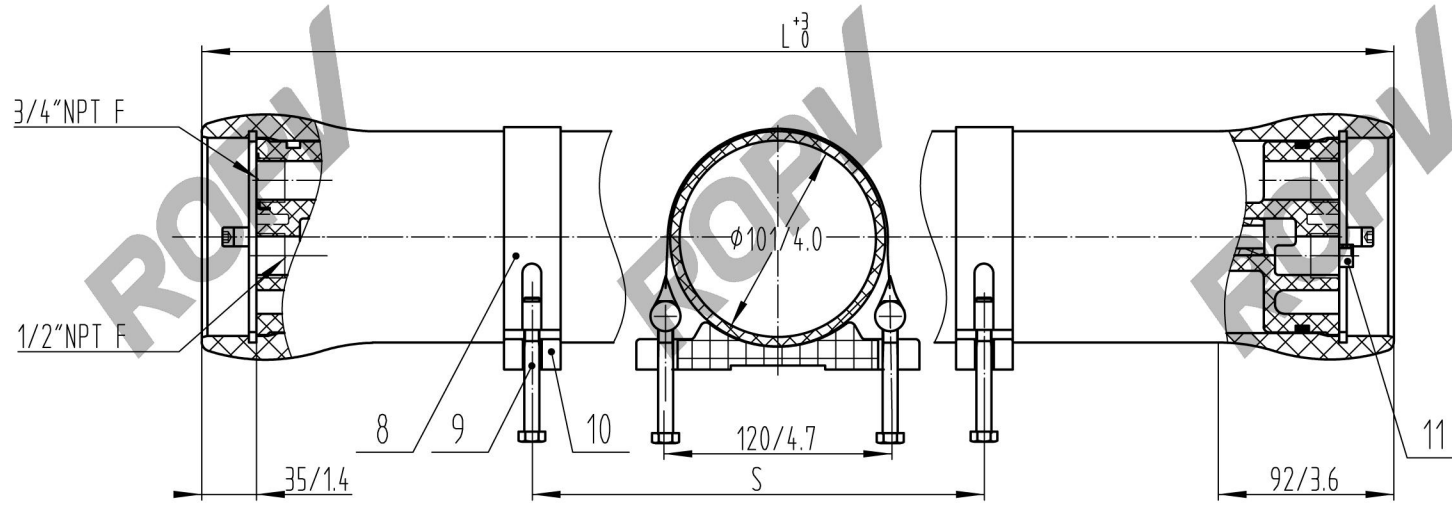


450
PSI



- 1 Design pressure 450PSI(3.1MPa)
- 2 Design temperature 150°F(66°C)
- 3 Min. allowable temperature 14°F(-10°C)
- 4 Working medium, water PH 3-11
- 5 Internal permeate pressure not to exceed 125PSI(0.88MPa)
- 6 Please operate according to directions
- 7 Subject to chance without notice, please sign in the website of the company to inquire.(www.ropv.com.cn)
- 8 Others can be use recycle except shell need specialized callback

12	GB/T70.1 M6x20	Locking Crescent Screw	4	304SS	
11	4013.1	Plug	1	Engineering Thermoplastic	
10	4010	Saddle	2~3	NR	
09	GB/T5782 M8x60	Strap Screw	4~6	304SS	
08	4008.1	Strap	2~3	304SS	
07	12.5x1.8G GB/T3452.1	O-Ring	4	EPDM	
	19x2.65G GB/T3452.1				
06	14x2.65G GB/T3452.1	O-Ring	2	EPDM	
	17x2.65G GB/T3452.1				
05	4011.1	Locking Crescent	4	304SS	
04	4021.1	Adapter	2	Engineering Thermoplastic	for flat membrane
	4021	Adapter			
03	90x5.3G GB/T3452.1	O-Ring	2	EPDM	
02	4033.1	End Plate	2	Engineering Thermoplastic	for flat membrane
	4033Z				
01	4029.7-12	Pressure Shell	1	FRP	Opt for blue or white
Ref	Part Number	Description	Qty	Material	Note

Shell Length Code	Shell Number	L L.O.A (MM/IN)	S Span (MM/IN)	Approx assembly weight (KG/LB)
1	4029.7	1278/50.3	600/23.6	9/20.3
2	4029.8	2294/90.3	1200/47.2	13/29.3
3	4029.9	3310/130.3	2200/86.6	17/38.3
4	4029.10	4326/170.3	1600/63.0x2	21/47.3
5	4029.11	5342/210.3	2300/90.6x2	26/58.6
6	4029.12	6358/250.3	2700/106.3x2	30/67.6

ROPV	DESIGN	Harbin ROPV Industry Development Center	
	REVIEW	MODEL	R4040B450E PRESSURE VESSEL
	APPROVAL	DRG	R4040B450E-00
		REV	10