

C20 Series Valves How to Order

Ordering Information

1	2	3	4	5	6	7	8	9	10	11
C	2		A							

A complete C22, C23 or C24 Model Number contains 11 digits, including 8 customer-specified design and material options, for example: C22AABNSSEF.

Digit	Order Code	Description
1-3		Valve Configuration & Capacities
	C22	3-10 gpm (11.3-37.8 l/min)
	C23	3-20 gpm (11.3-75.7 l/min)
	C24	5-40 gpm (18.9-151.4 l/min)
4		Inlet/Outlet Ports
	A	NPT Ports
5		Pressure Range (Spring Selection)
	A	75-500 psi (5-34 bar)
	B	500-1000 psi (34-69 bar)
	C	1000-1500 psi (69-103 bar)
6		Body/Top Material
	B	Brass/Plated Steel
	H	Hastelloy CW12MW/Plated Steel
	S	316L Stainless Steel/Plated Steel
7		Seals/Back-up Seals
	A	Urethane/UHMW Polyethylene
	B	FKM/UHMW Polyethylene
	E	EPDM/PTFE
	N	Buna-N/Buna-N
	V	FKM/PTFE
8		Valve Seats
	H	Hastelloy C
	R	316L Stainless Steel
	S	17-4 Stainless Steel
	T	Tungsten Carbide
9		Plungers
	H	Hastelloy C
	R	316L Stainless Steel
	S	17-4 Stainless Steel
	T	Tungsten Carbide
10		Seat Size
	E	For C22 Models
	J	For C23 Models
	N	For C24 Models
11		Port Size
	F	For C22 Models (3/4")
	G	For C23 Models (1")
	H	For C24 Models (1-1/4")

For Installation Guidelines, and reference on identifying metallic components of C20 Series plungers and plunger valve seats, see page 9.

Ratings and Specifications

Flow Capacity Model	Maximum		Minimum	
	gpm	l/min	gpm	l/min
C22	10.0	37.8	3.0	11.3
C23	20.0	75.7	3.0	11.3
C24	40.0	151.4	5.0	18.9

Pressure Range (All Models)	Model Configuration		
	AA	AB	AC
psi	75-500	500-1000	1000-1500
bar	5-34	34-69	69-103

Max. Temperature 200°F (93°C)

Inlet & Outlet Ports

C22	3/4" NPT
C23	1" NPT
C24	1-1/4" NPT

Weight

C22	3 lbs. (1.3 kg)
C23	6 lbs. (2.7 kg)
C24	10 lbs. (4.5 kg)

C22 valves are used with Hydra-Cell models D10 and D12.

C23 valves are used with Hydra-Cell model H25.

C24 valves are used with Hydra-Cell models D35 and D66.

C20 Series valves can be used as a lower-cost alternative to C60 Series seal-less valves when higher discharge pressures are not required.

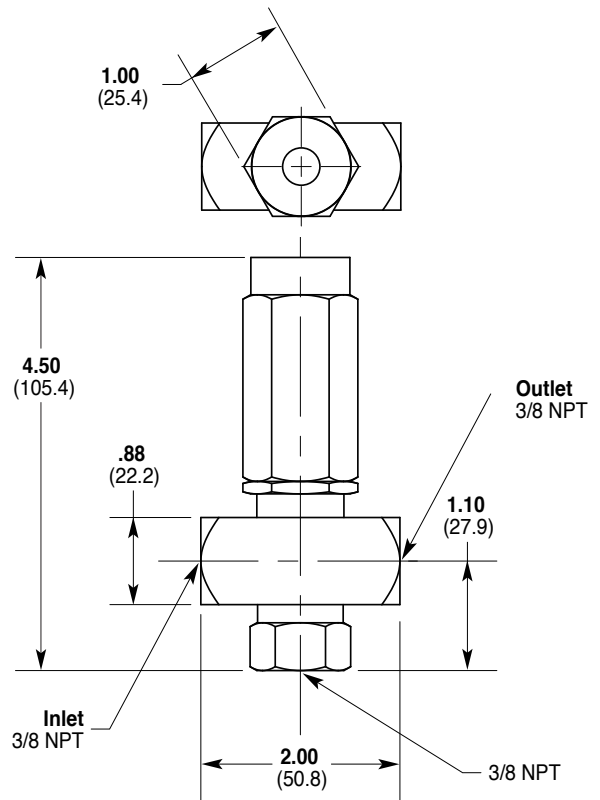
C46 Series Valves

Dimensions

C46 for In-Line Mount with 3/8" NPT Ports Inches (mm)



C46 In-line with Stainless Steel body.

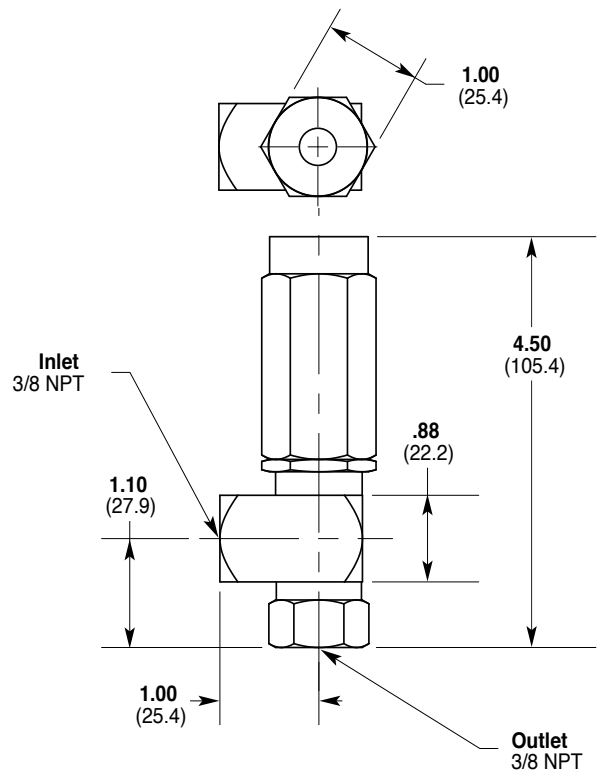


C46 Off-line with Brass body.

C46 for Off-Line Mount with 3/8" NPT Ports Inches (mm)



C46 Off-line with Stainless Steel body.



C46 Series Valves How to Order

Ordering Information



A complete C46 Model Number contains 11 digits, including 4 customer-specified design and material options, for example: C46AABESSEE

Digit	Order Code	Description
1-3		Valve Configuration & Capacities
	C46	0.2-10 gpm (1-37.8 l/min) NPT Ports
4		Mounting Design
	A	In-line
	B	Off-line
5		Pressure Range (Spring Selection)
	A	Low Spring: 50-500 psi (3-34 bar)
	B	Medium Spring: 100-900 psi (7-62 bar)
	C	Standard Spring: 200-1500 psi (13-103 bar)
6		Body Material
	B	Brass
	S	316L Stainless Steel
7		O-rings
	E	EPDM
	N	Buna-N
	V	FKM
8		Piston
	S	316L Stainless Steel
9		Seat
	S	316L Stainless Steel
10		Seat Size
	E	For C46 Models
11		Port Size
	E	For C46 Models (3/8" NPT)

For Installation Guidelines, see page 9.

Ratings and Specifications

Flow Capacity Model	Maximum		Minimum	
	gpm	l/min	gpm	l/min
C46 In-line	7.0	26.5	0.2	1.0
C46 Off-line	10.0	37.8	0.2	1.0
Pressure Range				
Low Spring	50-500 psi (3-34 bar)			
Medium Spring	100-900 psi (7-62 bar)			
Standard Spring	200-1500 psi (13-103 bar)			
Max. Temperature	200 °F (93 °C)			
Inlet & Outlet Ports	3/8" NPT			
Weight	12 oz. (0.33 kg)			

C46 Series valves are used with Hydra-Cell models F20, F21, F22, M03, D03, and M03 Mono-Block.

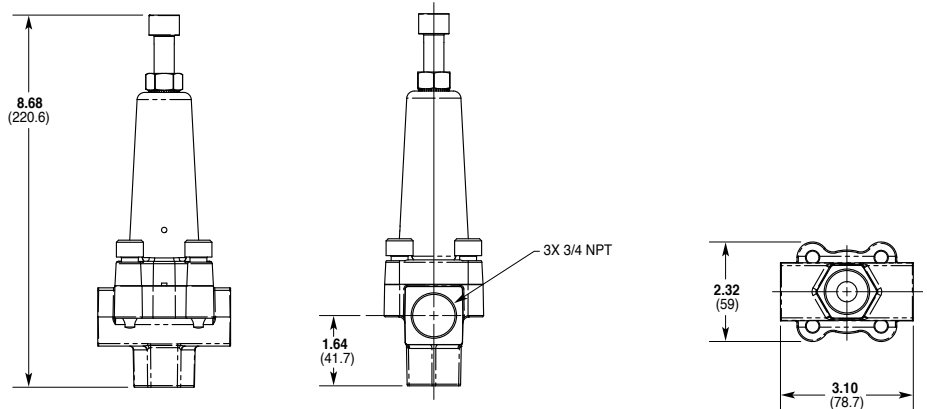
C60 Series Valves

Dimensions



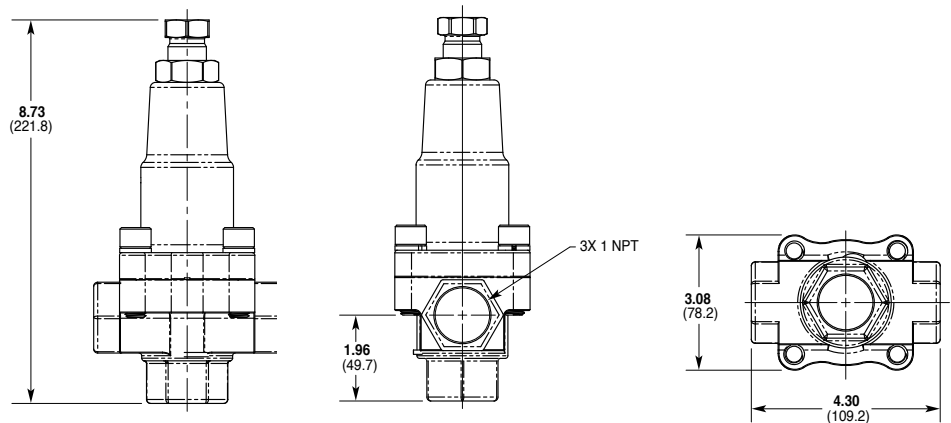
C62 valve with Stainless Steel body

C62 with 3/4" NPT Ports Inches (mm)



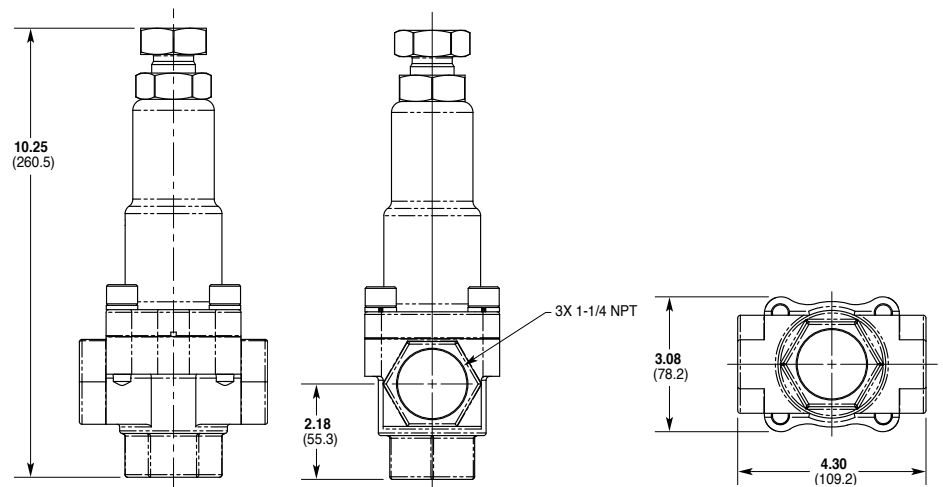
C63 valve with Brass body

C63 with 1" NPT Ports Inches (mm)



C64 valve with Stainless Steel body

C64 with 1-1/4" NPT Ports Inches (mm)



C60 Series Valves How to Order

Ordering Information

1	2	3	4	5	6	7	8	9	10	11
C	6		A							

A complete C62, C63 or C64 Model Number contains 11 digits, including 8 customer-specified design and material options, for example: C62ABVSSEF.

Digit	Order Code	Description
1-3		Valve Configuration & Capacities
	C62	1-14 gpm (3-53.0 l/min)
	C63	1-25 gpm (3-94.6 l/min)
	C64	1-40 gpm (3-151.4 l/min)
4		Inlet/Outlet Ports
	A	NPT Ports
5		Pressure Range (Spring Selection)
	A	C62: 75-500 psi (5-34 bar) C63: 75-1000 psi (5-69 bar) C64: 75-1000 psi (5-69 bar)
	B	C62: 500-2500 psi (34-172 bar) C63: 1000-2500 psi (69-172 bar) C64: 1000-2500 psi (69-172 bar)
6		Body/Top Material
	B	Brass/Plated Steel
	H	Hastelloy C/Plated Steel (available for C62 only)
	S	316L Stainless Steel/Plated Steel
7		O-rings/Diaphragm
	J	PTFE/PTFE
	V	FKM/PTFE
8		Valve Seats
	H	Hastelloy C (available for C62 only)
	R	316L Stainless Steel
	S	17-4 Stainless Steel
	T	Tungsten Carbide (available for C62 only)
9		Plungers
	H	Hastelloy C (available for C62 only)
	R	316L Stainless Steel
	S	17-4 Stainless Steel
	T	Tungsten Carbide (available for C62 only)
10		Seat Size
	E	For C62 Models
	J	For C63 Models
	N	For C64 Models
11		Port Size
	F	For C62 Models (3/4")
	G	For C63 Models (1")
	H	For C64 Models (1-1/4")

Hastelloy C Body available only for C62 models.

Hastelloy C and Tungsten Carbide Valve Seat/Plunger options available only for C62 models.

C62 models fitted with Tungsten Carbide Valve Seats/Plungers rated to 1800 psi (124 bar) maximum.

For Installation Guidelines, see page 9.

Ratings and Specifications

Flow Capacity Model	Maximum		Minimum	
	gpm	l/min	gpm	l/min
C62	14.0	53.0	1.0	3.8
C63	25.0	94.6	1.0	3.8
C64	40.0	151.4	1.0	3.8

Pressure Range	Model Configuration	
	AA	AB
C62	psi	75-500
	bar	5-34
C63	psi	75-1000
	bar	5-69
C64	psi	75-1000
	bar	5-69

Max. Temperature	200° F (93° C)
Inlet & Outlet Ports	
C62	3/4" NPT
C63	1" NPT
C64	1-1/4" NPT

Weight	
C62	4.0 lbs. (1.8 kg)
C63	6.2 lbs. (2.8 kg)
C64	7.2 lbs. (3.3 kg)

C62 valves are recommended for Hydra-Cell models D04, D10, D12, and D15/D17.

C63 valves are recommended for Hydra-Cell model H25.

C64 valves are recommended for Hydra-Cell model D35.

The model C62 seal-less valve is the most frequently specified pressure regulating valve in a Hydra-Cell pumping system.

Hydra-Cell® C Series Valves Reference

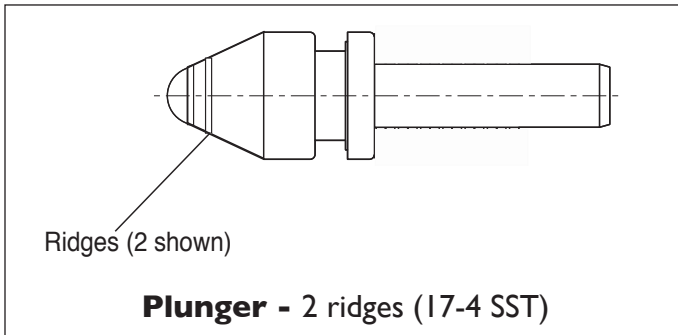
Identifying Metallic Components

Since it is often difficult to distinguish between metallic materials used, identification marks have been added to several machined metallic components of Hydra-Cell pumps and valves.

Plunger (C22/C23/C24 Valves)

Identified by ridges (or no ridges) around the tapered end.

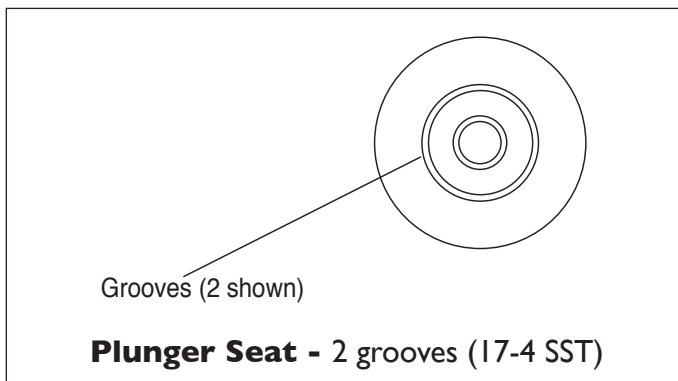
17-4 SST	2 ridges
316L SST	1 ridge
Hastelloy C	No ridges



Plunger Seat (C22/C23/C24 Valves)

Identified by circular V-shaped grooves (or no grooves) on one face.

17-4 SST	2 grooves
316L SST	1 groove
Hastelloy C	No groove



Installation Guidelines

Hydra-Cell C Series pressure regulating valves are installed on the discharge side of the pump to regulate the pressure of downstream process or equipment.

Pressure Regulator (Relief Valve)

Guidelines

1. Size the pressure regulator valve so that when fully open, it will be large enough to relieve the full capacity of the pump without excessive over-pressurizing of the system.
2. Locate the valve as close to the pump as possible and ahead of any other valves.
3. Adjust the pressure regulating valve to no more than 10% over the maximum working pressure of the system. Do not exceed the manufacturer's pressure rating for the pump and/or regulator.

Hydra-Cell®

Seal-less Pumps



Wanner Engineering, Inc.

World Headquarters & Manufacturing

Wanner Engineering, Inc.
1204 Chestnut Avenue
Minneapolis, MN 55403 USA
Phone: 612-332-5681 • Fax: 612-332-6937
Toll-Free Fax (USA): 800-332-6812
Email: sales@wannereng.com
www.Hydra-Cell.com

Regional Office

207 US Highway 281
Wichita Falls, TX 76310 USA
Phone: 940-322-7111
Toll-Free: 800-234-1384
Email: sales@wannereng.com
www.Hydra-Cell.com

Latin American Office

Avenida Senador Vergueiro 608 – Centro
São Bernardo do Campo/São Paulo, Brazil
CEP 09750-000
Phone: +55 (11) 99582-1969
Email: mmagoni@wannereng.com
www.Hydra-Cell-Pumps.com.br



Wanner International Ltd.

Wanner International, Ltd.
Hampshire - United Kingdom
Phone: +44 (0) 1252 816847
Email: sales@wannerint.com
www.Hydra-Cell.co.uk



Wanner Pumps Ltd.

Wanner Pumps, Ltd.
Kowloon - Hong Kong
Phone: +852 3428 6534
Email: sales@wannerpumps.com
www.WannerPumps.com

Shanghai - China
Phone: +86-21-6876 3700
Email: sales@wannerpumps.com
www.WannerPumps.com